

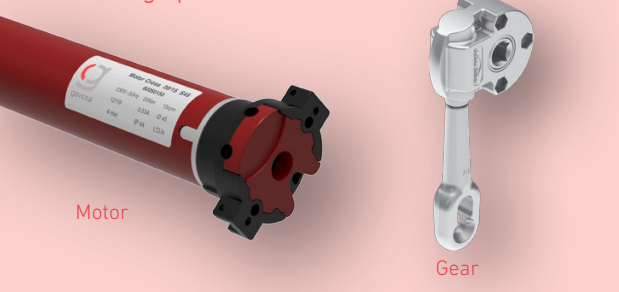
High performance
Monobloc system

Premium M1

Range of colors:



Driving options:



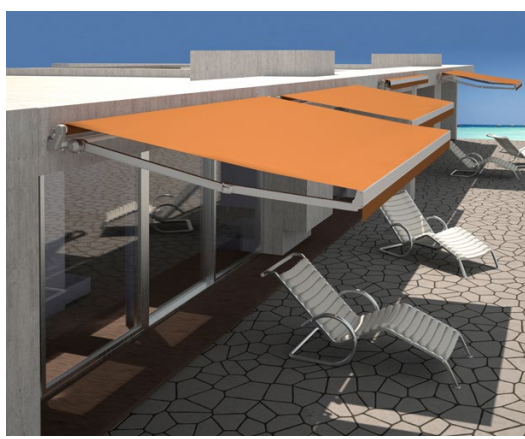
Motor

Gear

Multi-arm Monobloc system incorporating a 40 x 40 mm. square bar for the support of its components, which allows us to install more accessories as required by dimensions.

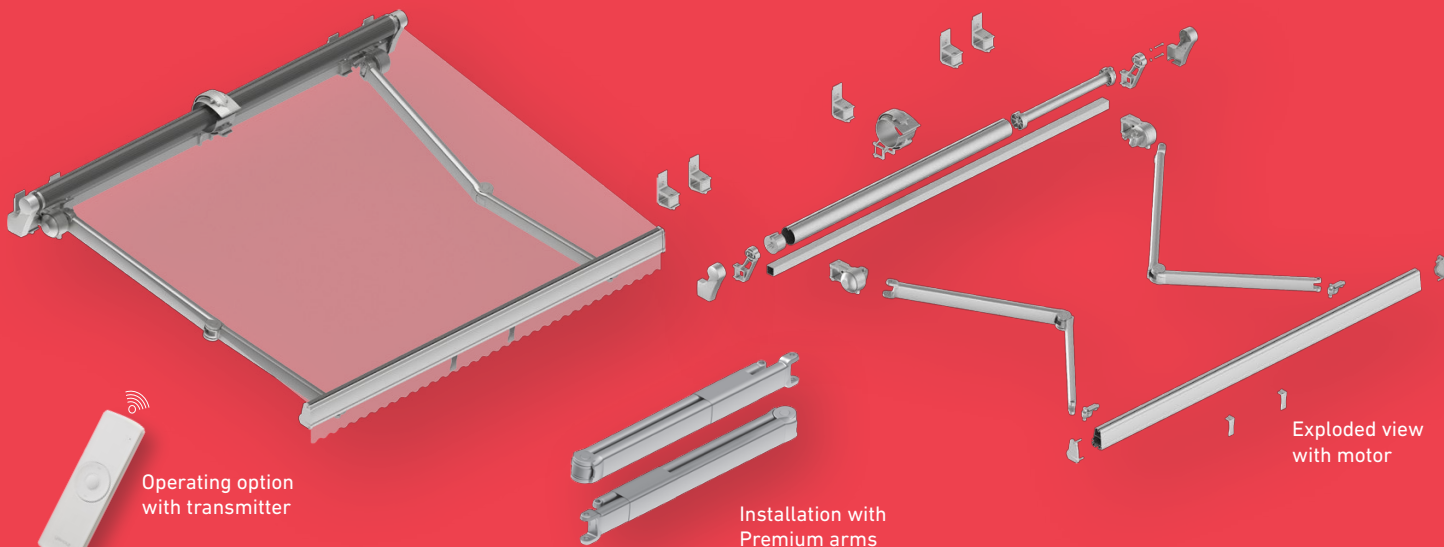
The great resistance and **simple application of Premium M1 Monobloc system**, enable **easy assembly**. It is ideal for covering large areas by the possibility of moving the arms to balance the tension on the fabric.

With only one set of arms we can have 6 meters width by 3.50 meters projection. From here, we can incorporate sets of arms up to having the desired length.



sunshine in the heart





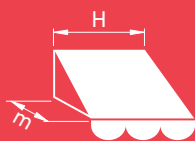
CE CLASS II
 EN 13561
 Classification based on Gaviota Simbac internal testing

Strength of 2 Premium Arms	
Projection	Strength (Kg)
1.50	50.5
1.75	55.1
2.00	61.2
2.25	66.5
2.50	71.3
2.75	77.9
3.00	83.6
3.25	87.5
3.50	91.7

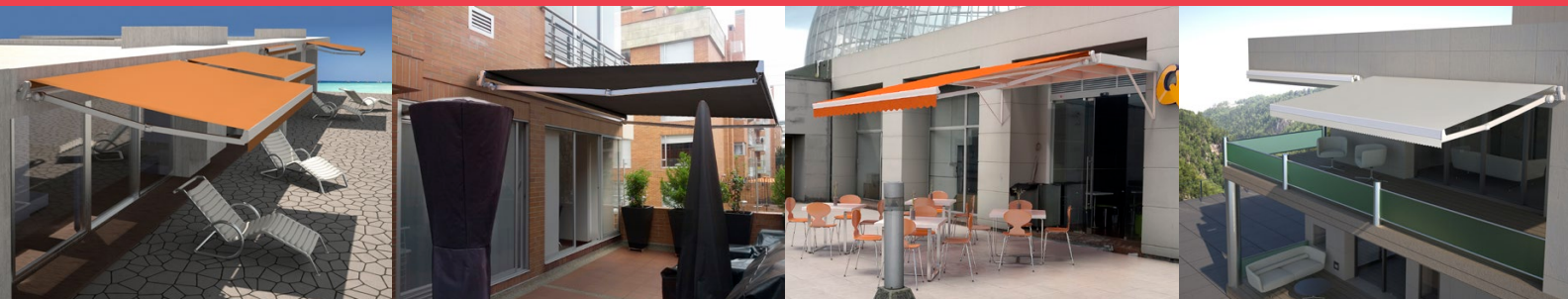
Measurements in meters

Wind Resistance Abacus										
	2.00	2.50	3.00	3.50	4.00	4.50	5.00	5.50	6.00	H m
IM	Class 2*	Class 2*	Class 2*	Class 2*	Class 2*	Class 2	Class 2	Class 1	Class 1	3.50
IM	Class 2*	Class 2*	Class 2*	Class 2*	Class 2	Class 2	Class 2	Class 1	Class 1	3.25
	Class 2*	Class 2*	Class 2*	Class 2*	Class 2	Class 2	Class 2	Class 2	Class 2	3.00
	Class 2*	Class 2*	Class 2*	Class 2	Class 2	Class 2	Class 2	Class 2	Class 2	2.75
	Class 2*	Class 2*	Class 3	Class 3	Class 3	Class 3	Class 3	Class 3	Class 3	2.50
	Class 2*	Class 2*	Class 3	Class 3	Class 3	Class 3	Class 3	Class 3	Class 3	2.25
	Class 2*	Class 3	Class 3	Class 3	Class 3	Class 3	Class 3	Class 3	Class 3	2.00
	Class 2*	Class 3	Class 3	Class 3	Class 3	Class 3	Class 3	Class 3	Class 3	1.75
	Class 3	Class 3	Class 3	Class 3	Class 3	Class 3	Class 3	Class 3	Class 3	1.50
	Class 3	Class 3	Class 3	Class 3	Class 3	Class 3	Class 3	Class 3	Class 3	1.25

*Assembled with crossed arms



Wind Resistance		
Class	Maximum Wind Speed	Pressure
1	28 l/m ² x h	40 N/m ²
2	38 l/m ² x h	70 N/m ²
3	49 l/m ² x h	110 N/m ²



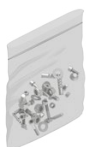
Technical Specifications:



Greater protection of the fabric whenever installing Premium Spiral Semibox.



Assembly option with V2 Flat Hood.



Camouflaged screws made of treated steel with excellent performance against corrosion and multi screwing.



Great strength and lacquered according to QUALICOAT standards.